

Electronic Repeat Dispensing (eRD)
AHSN Workforce Programme
BSW Practice Pharmacist
16th February 2022

Chris Learoyd
Senior Project Manager



Background

Wessex, Kent Surrey and Sussex (KSS), Oxford, the South West (SW) and West of England AHSNs are collaborating on eRD as part of the AHSN National Workforce programme.

The aim is to increase the **appropriate** use of eRD, creating **workforce improvements across primary care sectors** that can result from the initiative.

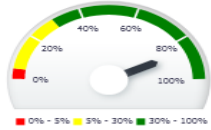
The SW and WoE collaborated in Spring 2020 to deliver a 5 part eRD webinar series to primary care colleagues, drawing on local experience

West of England Regional Overview – EPACKT2

Please note, 100% EPS or eRD attainment may not be feasible, depending on the nature of the practice, medications or the settings in which the medications are prescribed.

Percentage of EPS Items

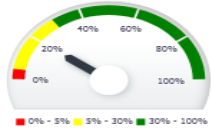
Based on all items



85.91%

Percentage of eRD Items

Based on all items



19.81%

Percentage of eRD Items

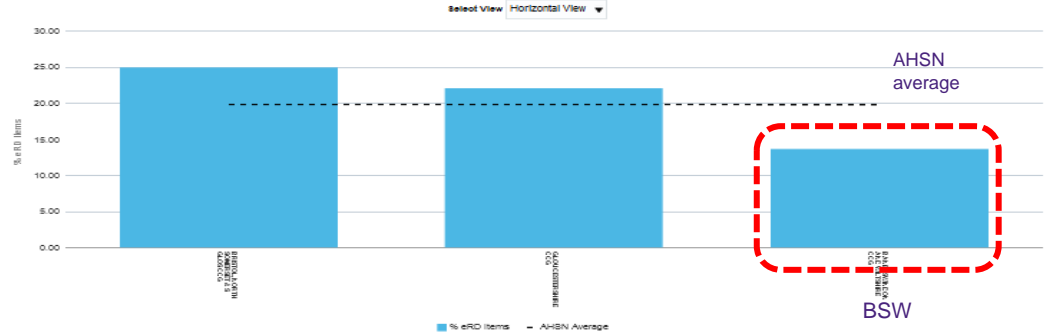
Based on EPS items only



23.06%

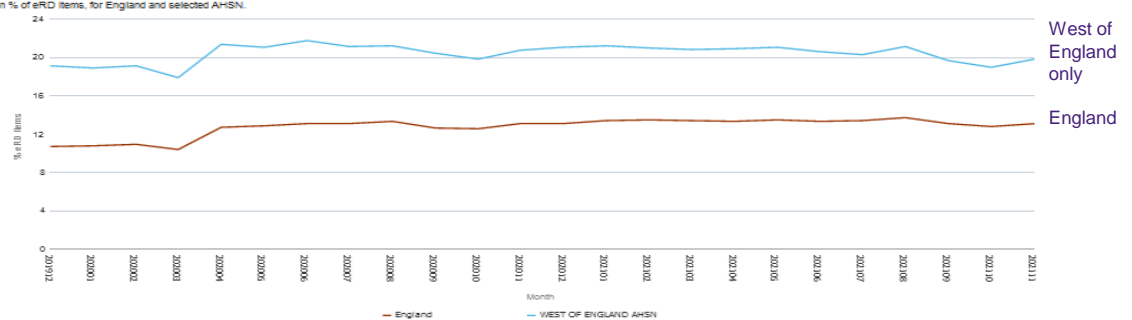
Percentage of eRD Items by CCG

Based on the number of eRD items compared to all items



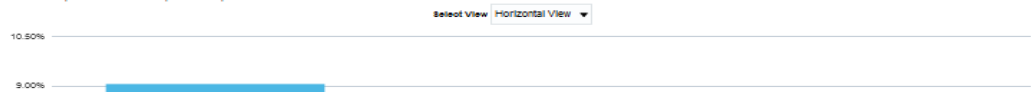
eRD Trend

Trend in % of eRD items, for England and selected AHSN.



Percentage of eRD Patients by CCG

Based on the number of patients on eRD compared to all patients

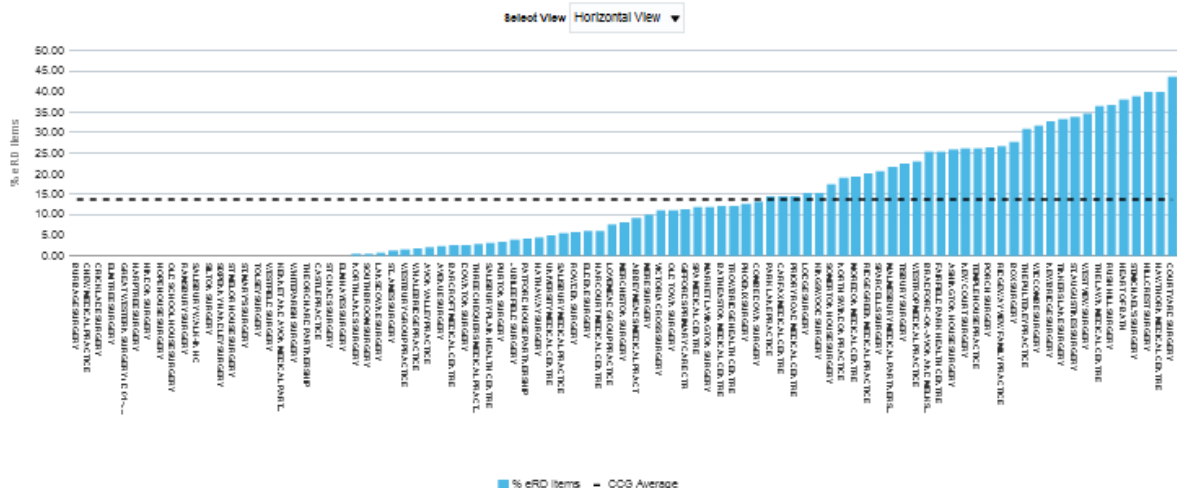


BSW regional overview – Practice level - EPACT2

* Year Month:
 * Commissioner / Provider:

Percentage of eRD Items by Practice

Based on the number of eRD Items compared to all items



PCN Dashboard & Data tables – E Pact2

Performance overview

Percentage of EPS Items

Based on all items for selected PCN(s)



88.72%

Percentage of eRD Items

Based on all items for selected PCN(s)



17.02%

Percentage of eRD Items

Based on EPS items only for selected PCN(s)



19.19%

Number of Practices in Selected PCN(s)

3

Number of Practices Above 5% eRD
For the selected PCN(s) and region

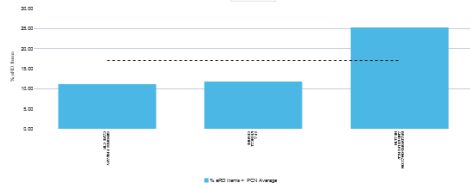
3

Practices with no eRD
For the selected PCN(s) and region

EPS and eRD Utilisation Dashboard: CCGs (GP Practices only) in England EPS + EPS and eRD Utilisation Dashboard: CCG Summary View + EPS and eRD Utilisation Dashboard: eRD Summary View + EPS and eRD Utilisation Dashboard: Practice Summary View + EPS and eRD Utilisation Dashboard: CCG Summary View + EPS and eRD Utilisation Dashboard: PCN Summary View

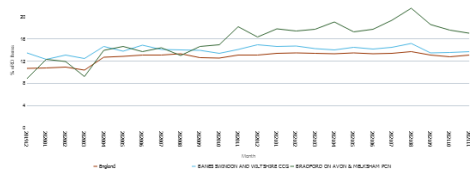
Performance overview

Based on the number of eRD items compared to all items for selected PCN(s)



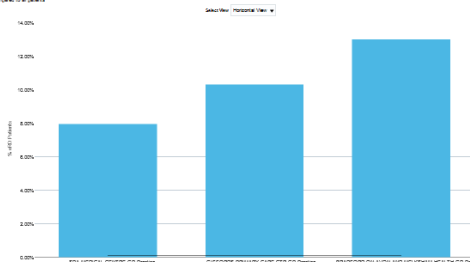
eRD % Items Trend

Trend in % of eRD items for England and selected PCN(s)



Percentage of eRD Patients by Practice

Based on the number of patients with eRD compared to all patients



Total Items	EPS Items	% EPS Items	eRD Items	% eRD of EPS Items	% eRD of All Items	Total Patients	EPS Patients	% EPS Patients	eRD Patients	% eRD Patients
39,040	33,930	86.91%	9,856	29.05%	25.25%	7,401	6,582	88.22%	971	13.01%
29,376	26,243	89.33%	3,277	12.49%	11.16%	5,378	5,303	98.61%	556	10.32%
28,118	25,473	90.59%	3,299	12.95%	11.73%	5,297	5,227	98.68%	421	7.95%



West of England
Academic Health
Science Network

How have other areas increased the use of eRD?

- Improved links and connections between GP surgeries and relevant community Pharmacists.
- Where appropriate, community pharmacists have 'referred' patients for review for appropriateness
- Used lists provided by [NHS BSA](#) to identify potentially appropriate patients and prevent drop off
- Focused initial approach to patients who meet:

<input type="checkbox"/> Stable medication	<input type="checkbox"/> Less than four items	<input type="checkbox"/> Not Monitored Dosage System (MDS) patients	<input type="checkbox"/> Not appliances, inhalers, insulin or creams
---	--	--	---

N.B - Requirement for consent from patient to switch to eRD suspended during COVID-19 pandemic. Permanent suspension likely.

Support & Resource available

- Free resources to help implement and maintain eRD - [West of England AHSN - eRD | Linktree](#)
- Searching in your GP system to identify patients who have dropped off eRD.
The following read codes are used for eRD:
 - **416224003** - **SystemOne** - Patient consent given for repeat dispensing information transfer
 - **415291006** – **SystemOne** - Repeat Dispensing at designated pharmacy
 - **XaKRX** - **CTV3 code** - Patient consent given for repeat dispensing information transfer
 - **9Nd3**- **V2 code** - Patient consent given for repeat dispensing information transfer
- NHS BSA – EPACT2 Data Dashboard access to PCN/Practice level (as per previous slides)
- Modelled data to highlight Time saving benefit opportunities

NHS BSA eRD Support

February 2022

Available Reports

- **GP Data Request Report**

Weekly report which provides information on the number of GP practices who have requested NHS Numbers Report. It also shows EPS and eRD utilisation at practice level

<https://www.nhsbsa.nhs.uk/pharmacies-gp-practices-and-appliance-contractors/prescribing-and-dispensing/electronic-repeat-dispensing-erd/erd-reports>

- **eRD Patient Drop off Report**

Monthly report which Identifies Patients who are no longer receiving one or more medicines through eRD. The report compares prescribing data over a 3 month period and identifies the number of patients who :

- received one or more eRD items in the first month we have analysed
- did not receive any eRD items in the second and third month analysed

<https://www.nhsbsa.nhs.uk/pharmacies-gp-practices-and-appliance-contractors/prescribing-and-dispensing/electronic-repeat-dispensing-erd/erd-reports>

- **EPS and eRD Utilisation Dashboard**

Monthly report which shows the variation in EPS and eRD prescribing across GP Practices

<https://www.nhsbsa.nhs.uk/access-our-data-products/epact2/dashboards-and-specifications/electronic-prescription-service-eps-and-electronic-repeat-dispensing-erd-utilisation-dashboard>

Practice Level Reports Available on Request

- **NHS Number Report**

Practice level data file which is available on request. The report provides the NHS numbers for patients who may be suitable for eRD prescribing that have received the same medicines, dispensed for 10 or more months in the last 12 months.

- **eRD Patient Review Report**

Practice level data file which is available on request. The report provides the NHS numbers for patients who will require a prescribing review as they have received their 10th eRD batch issue out of 12.

- **Practice eRD Report**

Monthly report delivered directly to a nominated NHS email address at the practice which shows the practice eRD activity and % change from the previous month for items and unique patients. This report may have previously been referred to as the eRD burst report.

Please note: we are only able to send NHS numbers to 'nhs.net' email addresses

Helpful Links

NHSBSA eRD Web Pages

<https://www.nhsbsa.nhs.uk/pharmacies-gp-practices-and-appliance-contractors/prescribing-and-dispensing/electronic-repeat-dispensing-erd>

GP Provider Assurance eRD Support

Queries, requests for support and report requests

nhsbsa.epssupport@nhs.net

eRD Resources for GP Practices

Provides a range of helpful resources to support utilisation of eRD

<https://www.nhsbsa.nhs.uk/pharmacies-gp-practices-and-appliance-contractors/prescribing-and-dispensing/electronic-repeat-dispensing-erd/erd-resources-gp-practices>

eRD Practice Report for My GP Practice(A00001) - November 2021

Headline figures for this month

Percentage of EPS Items
Based on all items
97.86%
Last Month: 96.12%
1.74% increase from last month

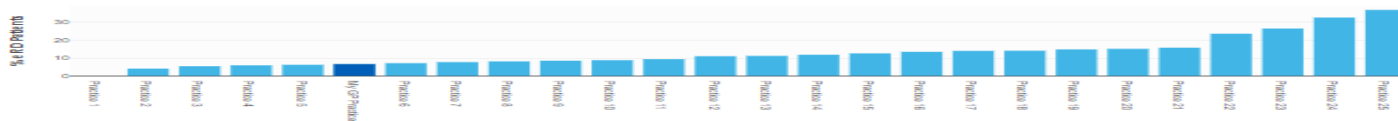
Percentage of ERD Items
Based on all items
29.73%
Last Month: 27.33%
2.4% increase from last month

Percentage of eRD Patients
Based on all items
6.70%
Last Month: 6.94%
-0.24% decrease from last month

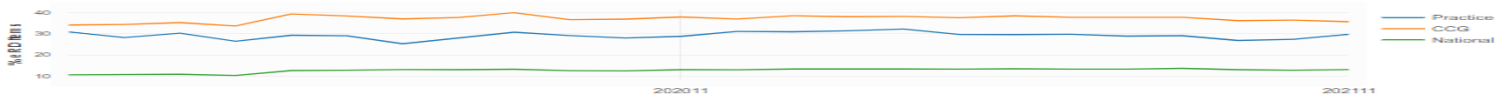
Percentage of eRD items by practice



Percentage of eRD patients by practice



Percentage of eRD items, last 24 months

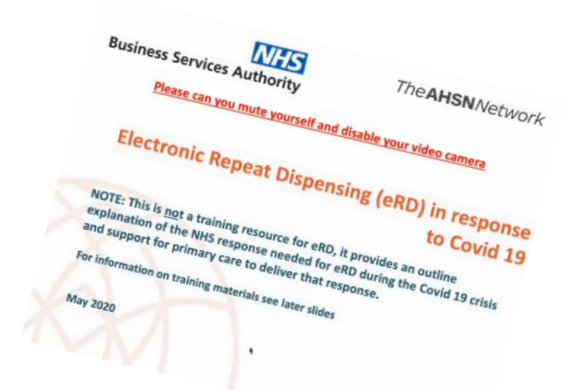
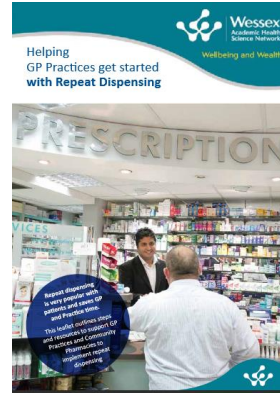
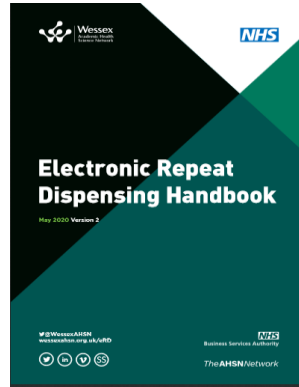


We can help you maximise your eRD use

Please visit [eRD information for GP practices - NHSBSA](#) or if you would like any support please email nhsbsa.epssupport@nhs.net

www.nhsbsa.nhs.uk

Some of the resources to support you



Significant amount of resources for eRD already available!

NHSBSA eRD support for GPs: Resources



[Request NHS Numbers](#) for patients who might be suitable for eRD by emailing us from your NHSmail account: nhsbsa.epssupport@nhs.net



[Download our COVID-19 poster](#) to highlight the benefits of using eRD to your patients.



[Download our guides](#) to help you get the most from eRD. Our guides include information on patient suitability and cancelling prescriptions.



[Download our ready-made letter or email template](#) to let your patients know about eRD.



Track your use of eRD by downloading our [weekly data report](#).



If you're an ePACT2 user, monitor the impact of initiatives to increase EPS and eRD utilisation using our [EPS and eRD dashboard](#).

Video Resources to Support Implementation

['Patient video explaining eRD'](#) (3 mins)

['Video outlining the process'](#) (3 mins)

['Managing Repeats'](#) (1 min)

['Time Savings'](#) (50 sec)

['Making the Most of eRD'](#) (56 sec)

['Considerations to make'](#) (1:57 mins)

['Making Changes'](#) (57 sec)

['Cancellations'](#) (30 sec)

['Prescriber Benefits'](#) (1:06 mins)

['General Advice'](#) (2:34 mins)

['Setting up eRD in EMIS'](#) (3:36 mins)

['Wessex eRD in Response to COVID-19' Webinar](#) (1:15 hours)

['eRD SystemOne' Webinar](#) (52 mins)

Resources for GP Practices

['eRD Information for GP Practices'](#) NHS BSA

['eRD set-up guide for SystemOne'](#) Doncaster CCG

['eRD e-learning course'](#) North East Commissioning Support

['Benefits of eRD'](#) NHS BSA

['eRD Patient Suitability Guide'](#) NHS BSA

['eRD Cancelling a Prescription'](#) NHS BSA

['eRD Pathway Guide'](#) NHS BSA

['eRD Handbook'](#) Wessex AHSN/NHS BSA

['Guide on Accessing EPS Utilisation Dashboard'](#) NHS BSA

['Explaining eRD to a Patient Crib sheet'](#) Dorset CCG

['COVID-19 eRD Quick Start Guide'](#) North Central London CCG

['COVID-19 eRD Guidance for GP Practices'](#) North Central London CCG

['Myth Busters: reducing barriers to implementation'](#) Wessex AHSN

['NCL COVID-19 Electronic Repeat Dispensing Guidance for GP'](#)

['NCL COVID-19 Electronic Repeat Dispensing Quick Start Guide – April 2020'](#)

Community Pharmacy Swindon and Wiltshire (CPSW)

CPSW are able to support with establishing relationships between practices and their local community pharmacies.

They piloted referral pathways between community pharmacists and GP practices (often involving PCN/Practice pharmacist) – pending review/assessment from practice based colleagues.

Supported consenting patient around eRD processes, easily workload in practice.

See embedded documents for further detail



CPSW - eRD Pilot report



CPSW eRD referral project guidelines



West of England
Academic Health
Science Network

www.weahsn.net

Email: Christopher.learoyd@nhs.net

