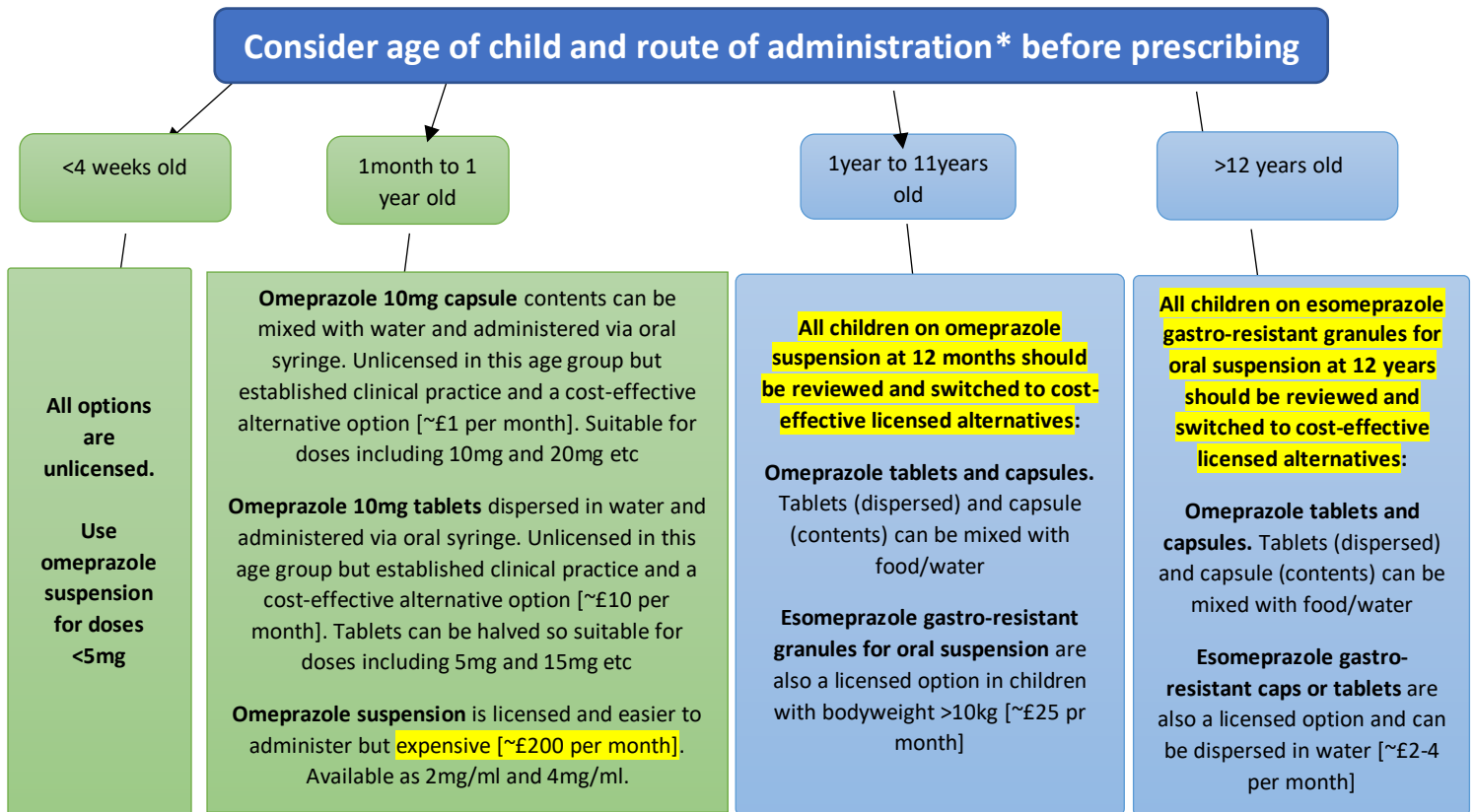




Proton-Pump Inhibitors (PPIs) for Gastro-oesophageal reflux disease (GORD) in paediatric patients. [BSWformulary](#) options



***If feeding tube in situ – seek advice from Specialist teams. Options licensed for administration via feed tube include:**

- Omeprazole dispersible tablets (licensed from 1 year of age). Check individual product SPC for advice on suitability of admin via feed tube.
- Esomeprazole gastro-resistant granules for oral suspension (licensed from 1-11yrs >10kg bodyweight)
- Omeprazole suspension (licensed from 4 weeks of age). Expensive option that requires switching at 12 months of age to cost-effective alternative.

General Dosing Recommendations – Any PPI must be prescribed for an appropriate indication and the need for long-term treatment should be reviewed periodically. Consult BNFC for correct dose. [NICE: BNF for Children](#)

Administration Recommendations

- CONSULT INDIVIDUAL SUMMARY OF PRODUCT CHARACTERISTICS (SPC) [Home - electronic medicines compendium \(emc\)](#)
- Dispersible tablets should be prescribed in doses rounded to the nearest whole/half tablet (10mg/5mg).
- Dispersible tablets may be broken and dispersed in water, fruit juice or fruit puree (DO NOT crush or chew the tablet) for administration. DO NOT try and manipulate dose by withdrawing a fraction of dispersed tablets as tablets do not dissolve evenly.
- Capsules should only be prescribed as whole capsule doses (10mg or 20mg). DO NOT prescribe part of a capsule dose.
- Capsules may be opened and the contents mixed with cold soft food such as yoghurt or fruit puree.
- Omeprazole 2mg/ml Oral Suspension is suitable for doses of ≤ 15mg. For doses of 20mg or greater, Omeprazole 4mg/ml Oral Suspension is suitable. Requires reconstitution (preferably by a pharmacist) prior to its dispensing to the patient and storage in a refrigerator.
- Esomeprazole gastro-resistant granules should be dispersed in 15ml water, stirred and left to thicken for a few minutes before stirring and administering within 30 minutes.

Further information: [CKS: GORD in children](#) / [Chapter 16 – Paediatrics – BSW Formulary](#) / [Medicines for Children](#) / [NICE: BNF for Children](#)