

MOCH Quarterly

Spring 2023



Welcome to the first edition of our new Care Home newsletter!

Hello everyone!

The BSW MOCH (Medicines Optimisation in Care Homes) team is a branch of the BSW (Bath and North East Somerset, Swindon & Wiltshire) Medicines Optimisation team specialising in providing support to all care homes across the BaNES, Swindon, and Wiltshire areas with medication related queries.

The team has had a restructure over the last year; it has now become a technician-led service and has some new team members. See below for an introduction to the new team.

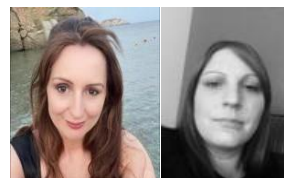


Sammy

Lead Care Home Pharmacy Technician



Claire Flo Charlotte Laura
Care Home Pharmacy Technicians



Lindsey Zoe
POD Team Leader Care Home Supervisor



Michelle
Specialist Prescribing Support Dietitian



Chloe Natalie
Prescribing Support Dietitians



Rebecca Lauren
Dietetic Assistants

Contact Us

Get in touch at: bswicb.bswmoch@nhs.net and visit our [BSW MOCH website](#).

We endeavour to reply within 48 hours of our opening hours from Monday to Friday – 9 am to 5pm.

More in depth/clinical queries will be transferred to the GP or PCN teams.

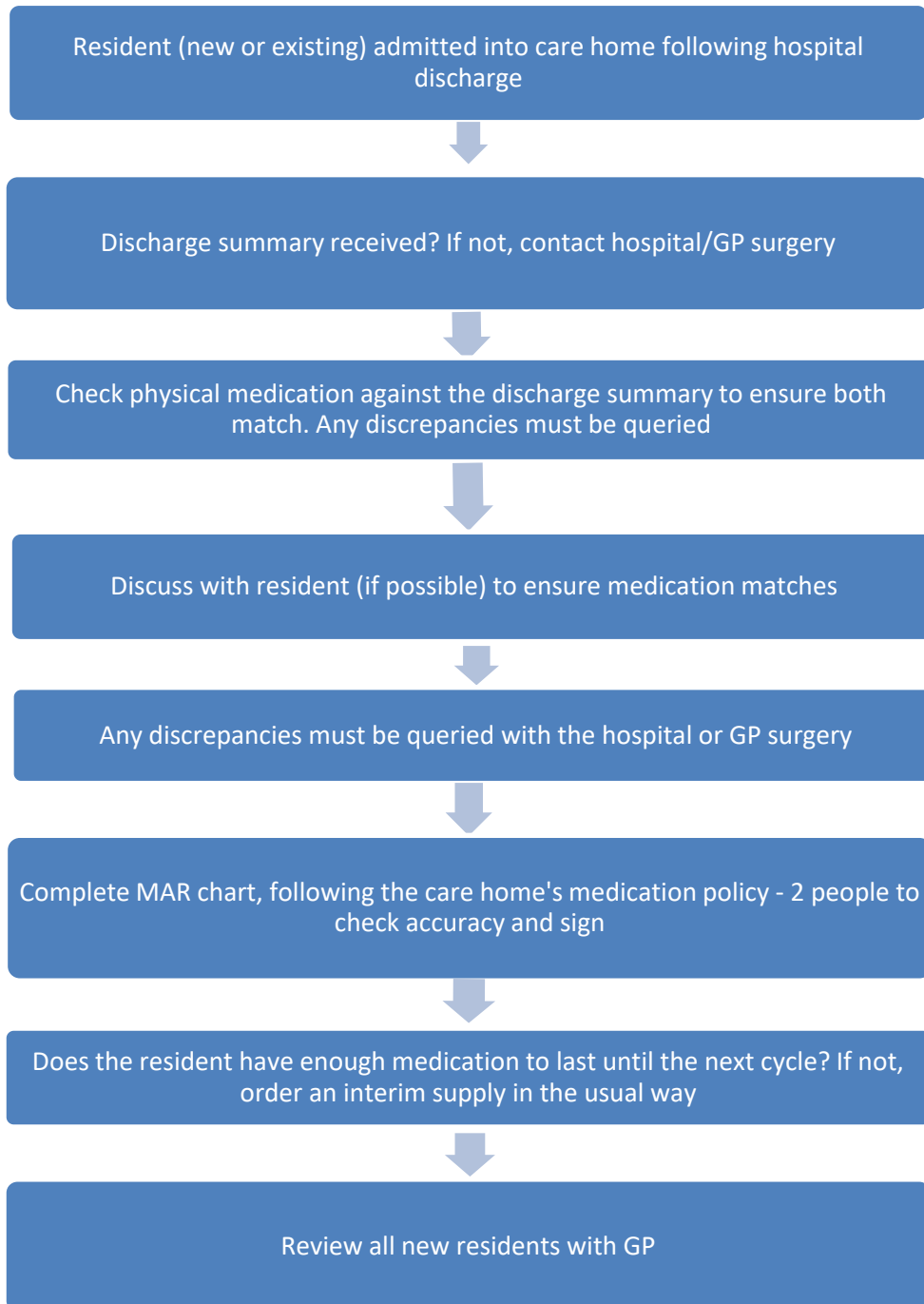


Learning Point



A recent incident occurred relating to the omission of an anticoagulant medication while a transfer of care between a hospital and care home was taking place. Unfortunately, this led to harm for the resident.

Following this, the MOCH team has produced a simple flow chart to guide care staff on performing a medicines reconciliation when a resident is admitted into the home.



Please note: This list is not exhaustive and any other relevant sources of information that are available on the transfer can be used to check and reduce error.



Co-beneldopa – Special Containers

The Department of Health and Social Care (DHSC) has re-classified all co-beneldopa and Madopar preparations as 'special containers'.

'Special container' status is generally granted where it is not practical to split a pack, for example if the product could absorb moisture from the air.

This means that pharmacies are no longer allowed to open original containers whilst dispensing any preparations of co-beneldopa, and full containers of 100 capsules/tablets/dispersible tablets must be supplied when dispensing.

Impact on Care and Nursing Homes:

As care homes and nursing homes get monthly medication as a 28-day cycle, extra supply will build up each month which should be carried over and kept in the medication cupboard with the rest of the resident's medication.

Example: Resident on co-beneldopa 25mg/100mg capsules, taking ONE capsule FIVE times a day = 140 capsules needed for 28-day cycle. If 200 capsules are supplied, an extra 60 capsules will build up every month. After 3 months, 180 extra capsules will have built up, which will be enough for the fourth 28-day cycle.

Actions for Care and Nursing Homes:

Count and record the remaining capsules/tablets thoroughly before ordering for the next cycle. Keep track of the remaining stock and assess whether supply is required when ordering each month.

Good to Know



May 2023 will have **three bank holidays** on the 1st, 8th and 29th; for information on pharmacies open in your local area, please visit the [NHSE pharmacy opening hours website](#).

Our [BSW MOCH website](#) is full of useful resources and information to support and guide care homes and nursing homes with safe and effective management of medications, such as a patch application chart (see example to the right).

Swindon and Wiltshire
Integrated Care Board

DAILY Transdermal Patch Application Record Chart

When using this chart, write 'see DAILY Transdermal Patch Application Record Chart' on main MAR. DO NOT DOUBLE RECORD.

Resident Name:	Date of Birth:
Drug/strength:	Frequency of application:
Details completed by:	Details checked by:

Special Instructions:
 • The old patch should be removed before applying the new patch. The old patch must be folded in half and stuck together before disposal, in accordance with the care home policy.
 • The site of application should be rotated in accordance with the manufacturer guidance.
 For rivastigmine, please see SPC <https://www.medicines.org.uk/emc/roduct/11855mpc>
 • Use a cross (x) to indicate where the new patch has been applied (this must be a cool, clean, dry, non-hair area of the body where either a visiting child or in some cases the resident cannot reach)

Day 1	Date	Time	Signed	Day 7	Date	Time	Signed
Applied				Applied			
Checked				Checked			
Removed				Removed			
Day 2	Date	Time	Signed	Day 8	Date	Time	Signed
Applied				Applied			
Checked				Checked			
Removed				Removed			
Day 3	Date	Time	Signed	Day 9	Date	Time	Signed
Applied				Applied			
Checked				Checked			
Removed				Removed			
Day 4	Date	Time	Signed	Day 10	Date	Time	Signed
Applied				Applied			
Checked				Checked			
Removed				Removed			
Day 5	Date	Time	Signed	Day 11	Date	Time	Signed
Applied				Applied			
Checked				Checked			
Removed				Removed			
Day 6	Date	Time	Signed	Day 12	Date	Time	Signed
Applied				Applied			
Checked				Checked			
Removed				Removed			

Please turn over for further application site information Day 13 - 28