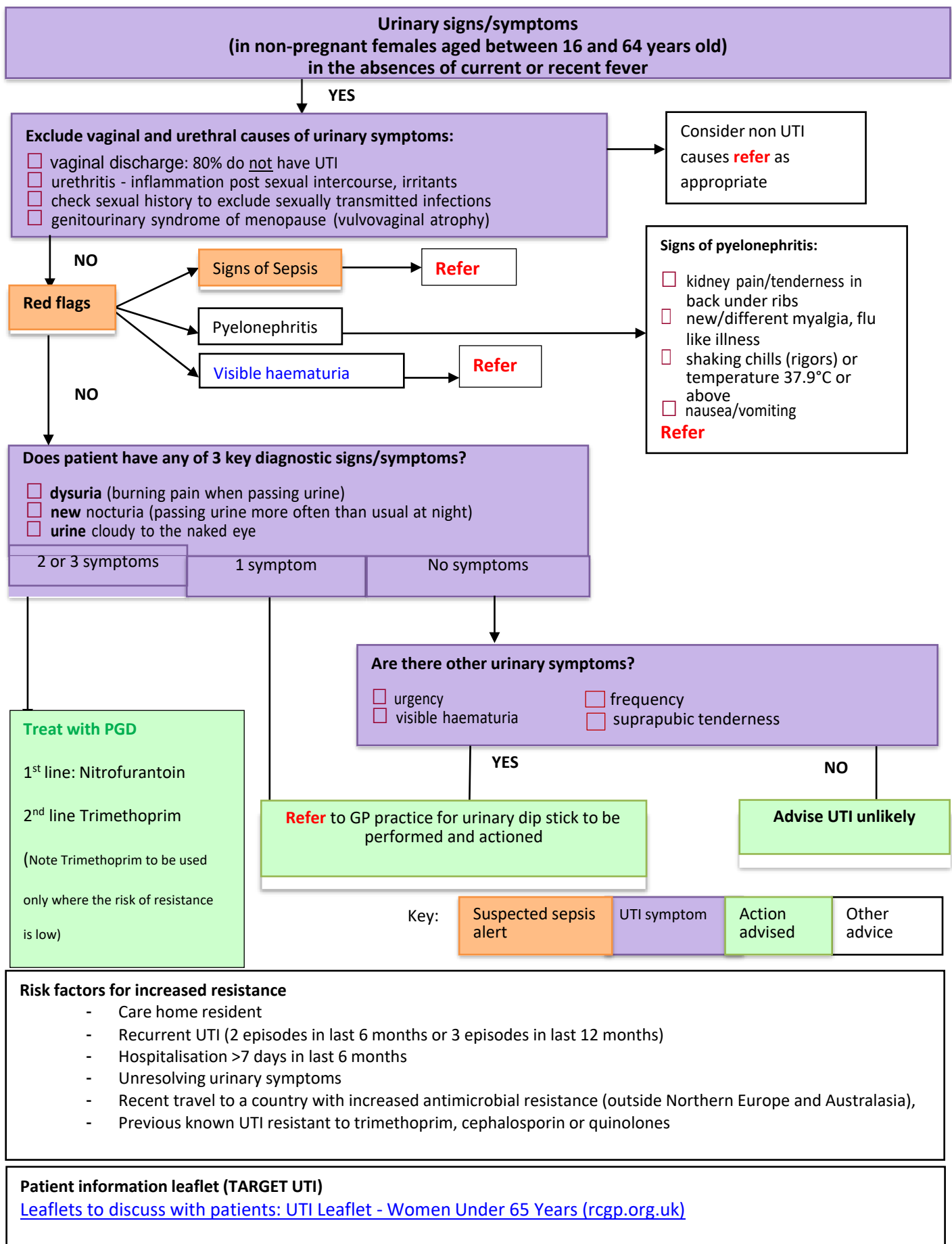


Community Pharmacy UTI PGDs – Summary Flow Chart

This summary should be used in conjunction with the full PGD document and the full BSWICB Lower UTI Guidelines ([Main heading \(bswtogether.org.uk\)](http://bswtogether.org.uk))



Key:

Suspected sepsis alert	UTI symptom	Action advised	Other advice
------------------------	-------------	----------------	--------------

Risk factors for increased resistance

- Care home resident
- Recurrent UTI (2 episodes in last 6 months or 3 episodes in last 12 months)
- Hospitalisation >7 days in last 6 months
- Unresolving urinary symptoms
- Recent travel to a country with increased antimicrobial resistance (outside Northern Europe and Australasia),
- Previous known UTI resistant to trimethoprim, cephalosporin or quinolones

Patient information leaflet (TARGET UTI)

[Leaflets to discuss with patients: UTI Leaflet - Women Under 65 Years \(rcgp.org.uk\)](http://rcgp.org.uk)