

Wound Care Update

Veronika Oross: Primary Care Lead Pharmacist

Maria Campbell-Widgery: Programme Officer

BSW ICB Medicines Optimisation Team



Welcome & Agenda

- TVN Leads
- Current supply routes
- The Prescription Route and the impact on wound care delivery
- The Direct Supply process and how it works
- How to manage wound care Rx requests
- Formularies and how to feed back
- Useful information
- Questions?
- Silver dressings with Eva Harris



Your Team



Bath and North East Somerset,
Swindon and Wiltshire
Integrated Care Board

Holly Pollock (BaNES)

Lead Tissue Viability Nurse Specialist



Eva Harris (Swindon)

Swindon Community Tissue Viability Team Lead



Great Western Hospitals
NHS Foundation Trust

Claire Checkley (Wiltshire)

Tissue Viability & Lymphoedema Lead, WHC



Maria Campbell-Widgery

Programme Officer, Medicines Opt. Team, BSW ICB

Veronika Oross

Primary Care Lead Pharmacist, BSW ICB



Bath and North East Somerset,
Swindon and Wiltshire
Integrated Care Board

Who and what.....

BaNES

- Community services TVNs: HCRG Care Group - Formeo + NHS SC (BSW ICB account) – can access any BaNES GP or NH Formeo account to order specialist product if needed
- Primary Care: GP surgeries and Nursing Homes - Formeo + NHS SC (BSW ICB account)
- Some GP surgeries (dispensing practices) still use FP10 route

Wiltshire

- Community Services TVNs: Wiltshire Health and Care - Internal procurement + NHS SC - can access any Wiltshire GP or NH Formeo account to order specialist product if needed
- Primary Care: Currently transformation from FP10 to direct supply
Cohort 1 - GP surgeries and Nursing Homes - Formeo + NHS SC (BSW ICB account) able to order from December 2023
Cohort 2 - GP surgeries and Nursing Homes - Formeo + NHS SC (BSW ICB account) training sessions in February 2024, will be able to order after completed training
Any GP surgery or Nursing Home who still not signed up and would like an account – please get in touch
Leg clubs/Clinics – Formeo + NWOS (BSW ICB account)

Swindon

- Community Services TVNs: GWH Community Services - - Internal procurement + NHS SC
- Primary Care: GP surgeries and Nursing Homes – ONPOS + NWOS (BSW ICB account)

The prescription process



The delay in the prescription process could lead to further clinical complications

1

Patient assessment

- Identify appropriate wound care treatment plan
- Limited/No access to dressings/compression (without prescription)
- May apply suboptimal dressing

2

Prescription process

- HCP writes request form
- Submits to admin clerk
- Admin Clerk collates and submits to G.P.
- G.P. signs script for patient they haven't assessed
- Prescription is sent to pharmacy
- Pharmacy orders products from wholesaler
- Wholesaler delivers product to pharmacy

3

Average 7 day process¹

- Prescription is dispensed
- Nurse or family member picks up the prescription or pharmacy delivers product to patient home

4

35% waste on prescriptions²

- Key therapeutics document 2012 showed 35% waste in wound care products via the prescription route

1. Date on file for Dorset 2. NICE Key Therapeutics Topics, April 2012. Also data on file from Dorset suggests 40% of respondents believed waste to be 20/40%



Impact on wound care delivery

2.75
hours¹

Nurses report spending on average 2.75 hours each week chasing/collecting prescriptions

87%
patient impact¹

87% of Nurses report that not having access to the right product at the point of care has negatively affected patient outcomes

82% of Nurses report **delayed healing**¹

60% of Nurses report **extra dressing changes**¹

The Direct Supply Process (Formeo/ONPOS)



Patient assessment

- Identify appropriate wound care treatment plan
- Immediate access to appropriate formulary dressing

1

Direct Supply process

- Web based ordering system:
 - Formeo/ONPOS
- Orders sent to wholesaler:
 - NHS SC/NWOS
- Delivery to base
- Stock held in base/location

2

Instant access to dressings

- Immediate access to appropriate formulary dressing
- No chasing prescriptions
- 100% formulary compliance

3

4

Zero waste

- Boxes can be split, and contents used on multiple patients
- No repeat prescriptions



Order to Delivery – How it Works

ORDER ON YOUR ORDERING PLATFORM

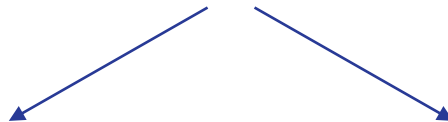
Formeo or ONPOS

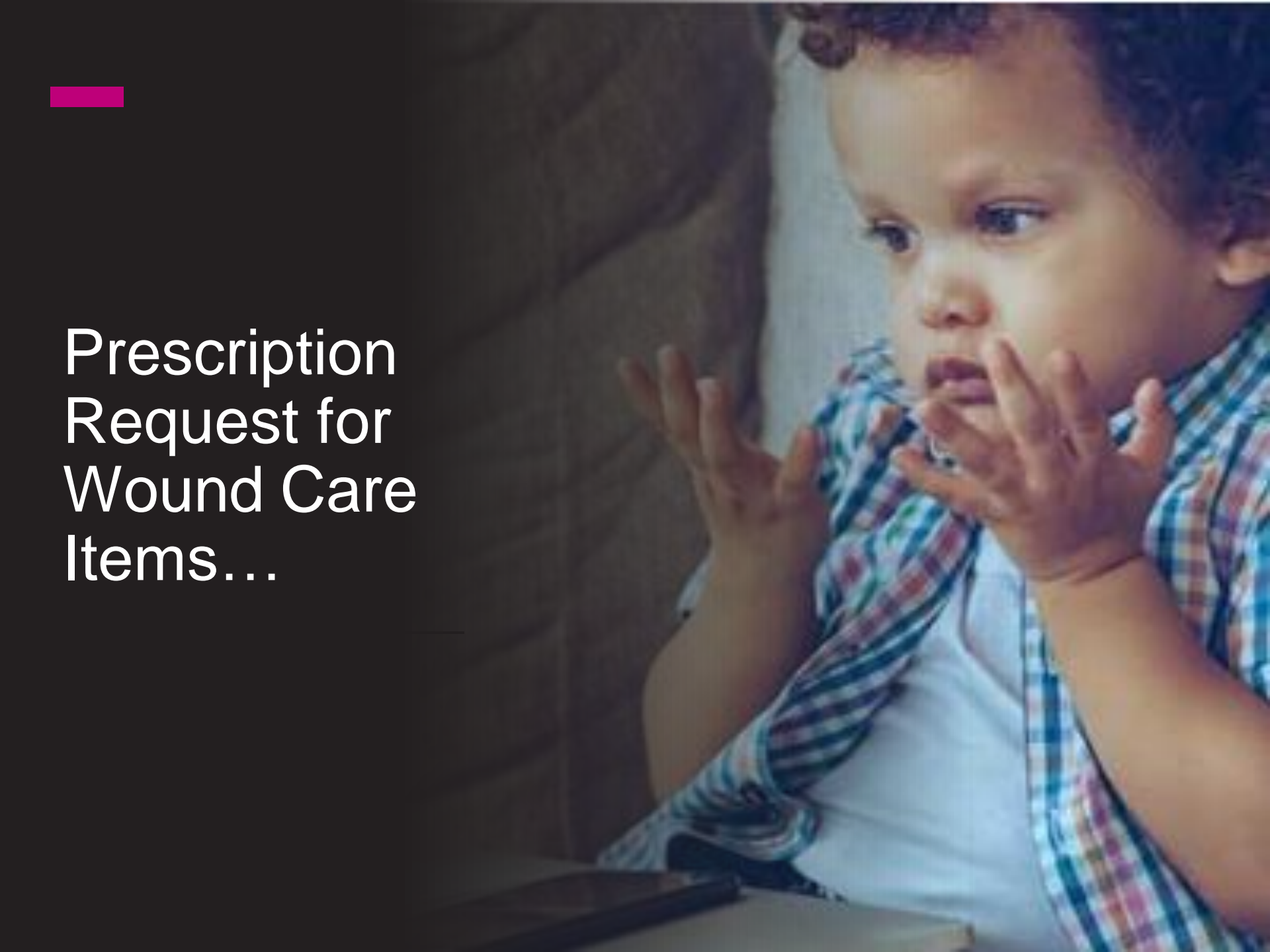


SUPPLIER

NHS Supply Chain (NHS SC) or North-West Ostomy supplies (NWOS)

PICKS AND PACKS YOUR ORDER, THEN DELIVERS...





Prescription
Request for
Wound Care
Items...

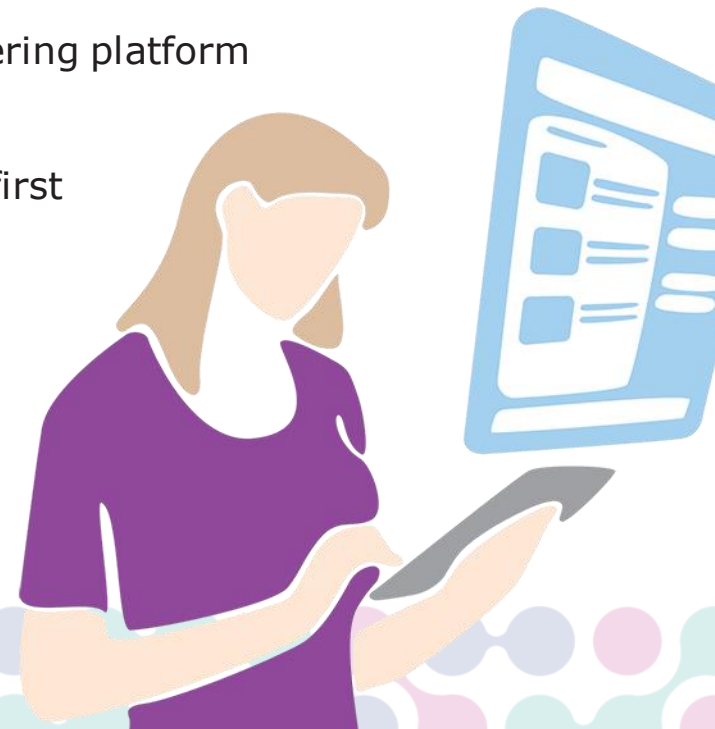
Wound Care Formularies

1. Formulary Wound Care [Chapter](#)

- Clinical pathways and guidance document
- General wound care, formulary and supply route information
- Formeo/ONPOS user guides

2. Formularies

- List of products approved by the TVNs for each role/team
- Four roles/team PN, DN, NH, Leg Clubs, TVN
- Formulary items for the user's role are on their ordering platform
- TTFN:
 - **Think** formulary (and therefore direct supply) first
 - **TVN** advice
 - **FP10** prescribing to be used only in exceptional circumstances
 - **Notes!**



Formulary Feedback



Bath and North East Somerset,
Swindon and Wiltshire
Integrated Care Board

Is welcomed!

If you or your nurses have concerns or questions about the formulary, please contact us via the prescribing inbox.

We will answer your question or take your formulary recommendation forward for consideration and evaluation at our Wound Care Formulary Group and/or Area Prescribing Committee (APC) as appropriate.

We have a Wound Care Formulary Working Group set up to standardise the use of wound care products across our ICS to ensure that only clinically effective products that have been evaluated are in use.

The Wound Care Formulary Group consists of a range of professionals who meet monthly:

- Tissue Viability Nurses
- Medicines optimisation colleagues
- Procurement colleagues
- Represent primary, community and secondary care



1. Supplier Code of Conduct

To maintain and achieve clinical credibility the group has developed a code of conduct which applies to all Supplier Representatives in respect of their sales activities across the named healthcare providers in the BSW & BNSSG WCFG.

Suppliers / Sales Representatives Code of Conduct

- a. Representatives are to only discuss and share products with clinicians in the area that are on the Formulary other than when invited to the below meetings.
- b. All evaluations must go through the Formulary meetings and the Tissue Viability Nurse/s (TVNs) in those organisations.
- c. Under no circumstances should 'cold calling' take place in any area and only when invited should representatives attend clinical areas.
- d. Teaching is welcomed but must be requested from clinical areas and approved by TVN leads.
- e. Visits to areas should be limited to every 6 months maximum unless otherwise agreed e.g. teaching, with the TVN's from the area.

New Products/ Innovation

Any companies that have a new / innovative product available should approach BWPC. BWPC will then take these to the Formulary Meetings for review. Products will only be considered if they are new and innovative or a new product that will bring cost savings in comparison to the current category. If your product meets these requirements, you will be invited to the meeting to present the product.



Contacts and Useful Information



Bath and North East Somerset,
Swindon and Wiltshire
Integrated Care Board

Issue	Who
General queries & formulary queries	Maria Campbell-Widgery bswicb.prescribing@nhs.net
Clinical Queries	Tissue Viability Nurses in your usual way
Formeo access or account problems	formeo.gb@smith-nephew.com
Delivery queries NHS SC (We are Bridgwater depot)	NHS Supply Chain Customer Services: 03000 136 205 ext 2108 ramona.wilson@supplychain.nhs.uk
ONPOS access or account problems	admin@onpos.co.uk or call 01733 392389
Delivery queries NWOS	NWOS Customer Services : 0800 316 7117 option 2 or email nwos.customerservice@nwossurgical.co.uk

Information	Location
Formeo Log-on page	https://formeo-online.co.uk/login
ONPOS Log-on page	https://onpos.co.uk/login
Formulary (list of products)	Wiltshire Formulary BaNES formulary Swindon Formulary
Formulary Chapter (list of useful information)	Wound Care Chapter Resources

If you have any questions or concerns at any point of the cycle, please do not hesitate to contact Maria or Veronika in Medicines Optimisation (bswicb.prescribing@nhs.net) and we will be pleased to help or point you in the right direction.

Questions

If we are unable to answer today, we will take your question away and come back to you with an answer.

