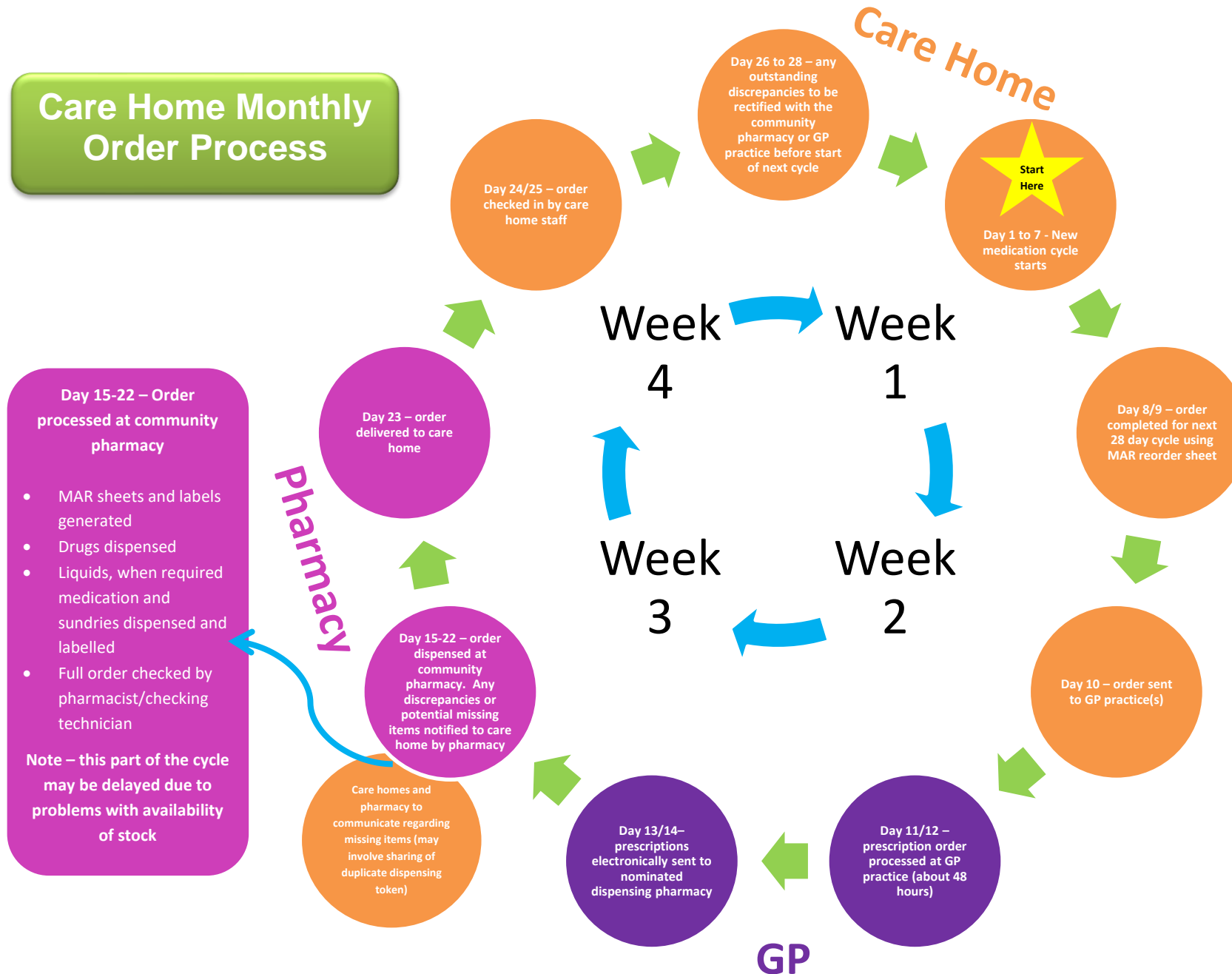


## Care Home Monthly Order Process

# MOCH

## Medicines Optimisation in Care Homes



### Day 15-22 – Order processed at community pharmacy

- MAR sheets and labels generated
- Drugs dispensed
- Liquids, when required medication and sundries dispensed and labelled
- Full order checked by pharmacist/checking technician

Note – this part of the cycle may be delayed due to problems with availability of stock

Please note: This is a guide only; timeframes may differ for your local pharmacy